



Accessories

TELEMATIC LIFT ASSISTANCE



DESCRIPTION

Urmel ATE offers a complete line of products for the realisation of telematic assistance installations for lifts and elevators. You have only one referent for all your needs. The heart of the system consists of an operations centre with sophisticated performance, that is easy to use, and two dedicated telematic assistance terminals, CallMe3 and CallMe4, which permit bi-directional communications with a Service Centre (or other fixed or mobile telephone number programmed) simply by pressing a button. But an exhaustive response also involves details. There is a wide range of versatile accessories in the ATE catalogue: a high performance GSM interface, control panels built according to EN 8128 norms, a galvanic interface for CallMe3 and other solutions. The GSM box proposed by Urmel is the simplest to use for the conversion of any existing Bi-directional System from an analogical to a GSM system. It is also useful in circumstances where the plant cannot be reached by the traditional telephone line. The interface therefore permits you to free yourself completely from the costs of the fixed telephone line. For all existing plants where, for various reasons, it is not possible to replace the cabin control panel, Urmel ATE has realised specific control panels capable of solving this type of problem in the most efficient manner. Two versions of the Urmel ATE control panels, produced in finely polished stainless steel, are available: the "Piana" and "Flat", both of which have an integrated loudspeaker and alarm button, realised with an extremely beautiful and innovative design.

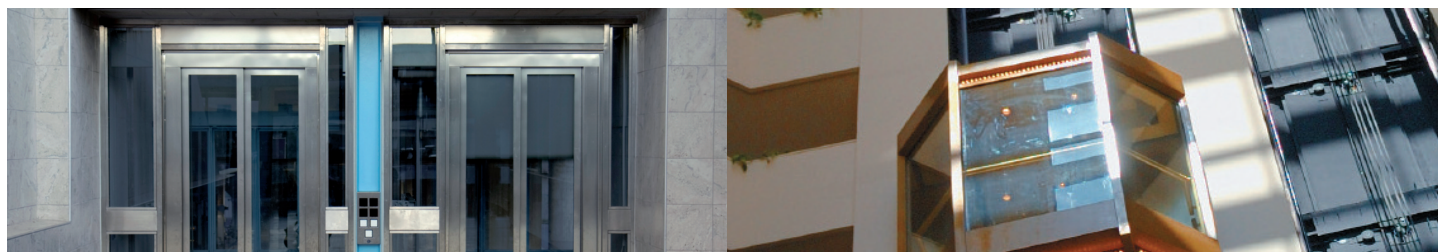
Finally, in order to simplify installation of CallMe3, Urmel ATE has realised an insulated galvanic interface, which permits connection directly to the terminal of the lift installation, without having to repeat existing contacts.





Accessories

TELEMATIC LIFT ASSISTANCE



GSM INTERFACE

Technical Characteristics:

- Voice and Data Functions;
- Top quality phonics;
- Simple and flexible installation;
- Possible extension of antenna in cases where the signal has low coverage;
- Power 230 Vac;
- High capacity rechargeable internal back up battery;
- Average absorption:
85mA in stand-by;
350mA during operation with on call mode;
- External dimensions: 220x170x50mm.
- Weight: 1400gr (with incorporated battery).

CONTROL PANEL

Technical Characteristics:

- Integrated loudspeaker;
- Alarm control panel with two-tone luminous signal: flashing yellow to signal dispatch of request for assistance, steady green during alarm management;
- Versions are available that are designed for connection with the "Overload" device (required in all installations that must satisfy the EN 81-70 norm). The Overload versions are equipped with a red signal light and acoustic signal.
Material: Finely polished stainless steel
External dimensions and weight:
- "Piana" Control Panel (HxLxW) approximately 263x90x35 mm 385 gr.;
- "Flat" Control Panel (HxLxW) approximately 318x110x25 mm 490 gr.;
- "Piana" Control Panel designed for Overload connection (HxLxW) approximately 318x90x35 mm 450 gr.;
- "Flat" Control Panel designed for Overload connection (HxLxW) approximately 360x110x25 mm, 550 gr.

POSSIBLE CUSTOMISATION.

INSULATED GALVANIC INTERFACE FOR CALL ME3

General Characteristics:

- The interface allows direct connection to the elevator installation, without repeating existing contacts;
- Extractable screw terminals for easy wiring;
- Polycarbonate material in din bar with 6 modules;
- Maximum load drop: 3V.
- Self-powered.

EQUIPMENT PROVIDED:

- Seven inputs: named from 1 to 7, the inputs can be wired in parallel to the existing devices (for example the alarm bell and relay windings for technical alarms); Each input can sustain cc and ac current from 6 to 24V;
- Two outputs: realised to repeat the CallMe3 outputs. When an output is activated, it is possible to pilot a load placed serially to it; for example, loads such as lamps and relays fed by power between 12 and 24V in cc or ac current can be piloted.

OTHER ACCESSORIES

- Standard Urmet External Station
- Intercom with one button, Atlantico Urmet series.
- 12V AC Transformer 1 in Din bar
- Extension cords for antenna for GSM interface.
- Call Me4 antenna extension cords.